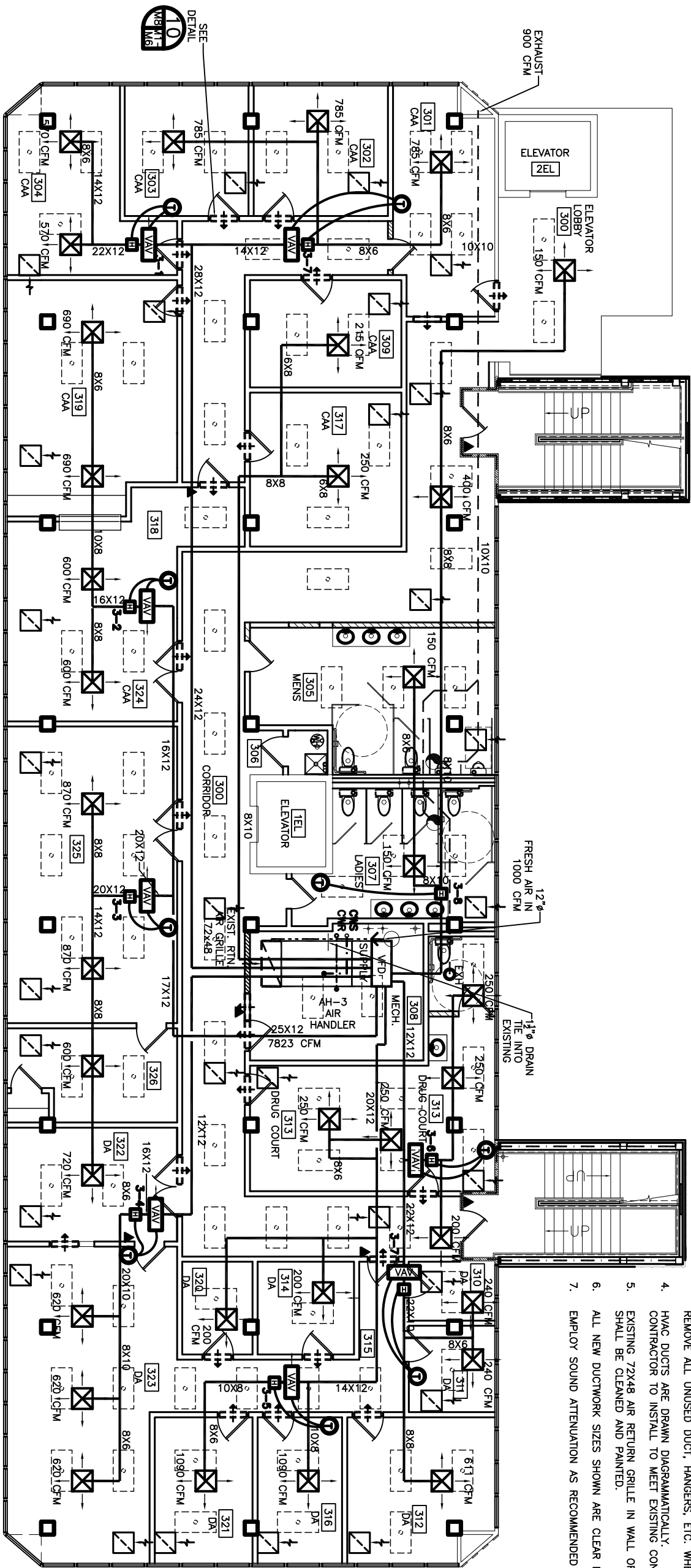


- NOTES:
- EACH ROOM TO HAVE AN OPENING BETWEEN ROOM CEILING SPACE AND HALL CEILING FOR RETURN AIR (32X12, TYP).
  - EXISTING DUCTWORK TO BE REUSED SHALL BE CLEANED PRIOR TO USAGE. SEE SPECIFICATIONS.
  - PORTIONS OF DUCTWORK NOT SHOWN AS BEING REUSED SHALL BE REMOVED, CLEANED AND REUSED IN OTHER LOCATIONS CALLING FOR THAT DUCT SIZE OR SMALLER. INSTALL CLOSURE PLATES AT ALL UNUSED OPENINGS IN DUCT NOT BEING REUSED. REMOVE ALL UNUSED DUCT, HANGERS, ETC. WHEN COMPLETE.
  - HVAC DUCTS ARE DRAWN DIAGRAMMATICALLY. CONTRACTOR TO INSTALL TO MEET EXISTING CONDITIONS.
  - EXISTING 72X48 AIR RETURN GRILLE IN WALL OF MECHANICAL ROOM SHALL BE CLEANED AND PAINTED.
  - ALL NEW DUCTWORK SIZES SHOWN ARE CLEAR INSIDE DIMENSIONS.
  - EMPLOY SOUND ATTENUATION AS RECOMMENDED BY VAV MANUFACTURER.



3RD FLOOR HVAC EQUIPMENT- VAV & HEATERS					
COOLING			HEATING		
ROOM	VAV NO.	COOL. SEN. CFM	MBH	KW	* VAV
304	3-1	24	1,140	7	2
324	3-2	56	2,580	10	3
325	3-3	66	3,060	11	3
322	3-4	40	1,860	7	2
315	3-5	47	2,180	4	1
313	3-6	15	700	4	1
E CORR.	3-7	29	1,091	10	3
307	3-8	-	-	17	5

\* - CARRIER PART NUMBERS OR EQUAL.

THIRD FLOOR MECHANICAL PLAN  
SCALE: 3/16"= 1'-0"

LEGEND

- NEW HVAC SUPPLY DUCT
- NEW EXHAUST DUCT
- HVAC AIR REGISTER 24 X 24, TITUS #TMSA-AA
- THERMOSTAT
- RETURN AIR GRILLE TO BE TITUS #50 W/1/4 X 1/4 CORE 24 X 24
- 500 FPM MECH. VEL., TOT. PRESS. .032" H2O
- RETURN AIR CASPED OPENING IN WALL - (ROOM TO CEILING) - TO EQUAL 200 SQ. IN.
- ELECTRIC DUCT HEATER
- VARIABLE AIR VOLUME DAMPER
- EXHAUST BLOWER
- VARIABLE FREQUENCY DRIVER
- HVAC

REVISD: 11-05-07ab  
REVISD: 06-04-07ab  
REVISD: 05-10-07ab  
REVISD: 05-02-07ab  
REVISD: 04-09-07ab  
REVISD: 03-30-07ab  
REVISD: 03-22-07

CONTRACT SET- 10/10/07

OF  
M-3

SHEET

DATE:12-07-06

JOB NO. 1729

FILE:

SCALE:AS NOTED

RENOVATE OFFICE BUILDING

**DAMMON ENGINEERING. INC.**

1095 FLORIDA AVENUE 985-649-5632 SLIDELL, LA. 70458  
DAMMONENGINEERING.COM

3RD FLOOR MECHANICAL PLAN

ST. TAMMANY PARISH ADMIN. COMPLEX  
520 OLD SPANISH TRAIL  
SLIDELL, LOUISIANA